

THE **FUTURE** OF ENERGY

EFFICIENCY

POWERING HOMES &
VEHICLES WITH *SMART*
ENERGY

THE WHOLE OF HOUSE APPROACH

CATALOGUE



WAYS TO *REDUCE YOUR ENERGY BILLS*

By switching to energy efficient infrared heating, air sourced hot water solutions, solar, and battery storage.

EV Charging
Solutions **03**

Infrared
Heating **06**

Air Sourced
Hot Water **09**

**READ
ME**



CONTENT

02 PROJECT EV

Introducing Project EV.

03 MEET THE APEX

Your No.1 EV charger for charging at home.

04 OUR FULL RANGE OF EV CHARGERS

View all our EV chargers, also providing for commercial & public application.

05 PROJECT CÜRV

Introducing Project CÜRV.

06 INFRARED HEATERS

A collection of energy efficient heating panels.

07 OUR RANGE OF GLASS & ALUMINIUM PANELS

Infrared heating solutions for all locations.

09 AIR SOURCED HOT WATER

View our range of energy efficient hot water solutions. Ranging from 80L to 250L cylinders.

11 BATTERY STORAGE

Store renewable energy, and off-peak energy.

12 SOLAR

Generate clean, green energy directly from your rooftop with our in-roof and on-roof solutions.

13 COMMERCIAL SOLUTIONS

Renewable solutions for businesses.



*The UK's Leading Domestic Solar
Retailer & Installer*



*One Of The UK's Top EV Charge Point
Manufacturers*



*Innovative Energy Efficiency Solutions
For Heating & Hot Water*

THE EVOLUTION OF EV CHARGING

A FULL RANGE OF AC & DC CHARGERS



**Residential
EV Chargers**



**Light-Commercial
EV Chargers**



**High-Power Commercial
EV Chargers**

At Project EV, we specialise in providing only the most cutting-edge electric vehicle charging points, connecting our customers with technology that breaks boundaries. Our goal is to help people finally make the switch to clean and affordable energy by adopting smart charging for electric vehicles.

With a wide range of floor and wall-mounted AC and DC electric car chargers, our technology provides you with the high energy output you need to keep your EV charged and running well. Our range of

electric vehicle charge points extends from 7.3kW AC up to 1MW DC, providing solutions for all locations. Our electric vehicle charging points come with full electrical and temperature protection, compact design, smart apps, and they are all tested to European standards, with an OCPP v1.6 open charge point protocol.

www.projectev.co.uk



**“Great Customer Service!
Brilliant Tech Support!”**
Highly Satisfied
Project EV Customer
★★★★★



Excellent



*4.8 out of 5 Reviews received 1050+

*Project EV Trust Score correct as of 07/24, the score and number of reviews are subject to change.



Feasibility & Design

Our design team can help create a detailed plan for the best placement of EV charge points. We work closely with you to understand your needs ensuring that our design reflects your vision while optimising functionality and aesthetic appeal.



National Engineer Coverage

Project EV have a UK-wide network of engineers that can install, service, and maintain EV chargers for homes, businesses, and public areas. Our team are trained and certified to handle installations for all environments.



Dedicated Customer Support

We have a dedicated customer support line available, for any questions related to our EV chargers. Our expert team are always ready to help, and provide round-the-clock assistance to assist you with any queries related to our EV chargers.

NEW

APEX

7.3kW & 22kW

**FAST AC SINGLE OUTLET EV CHARGERS
TETHERED OR UNTETHERED**



In the world of electric vehicle charging, Project EV's APEX stands as the pinnacle of innovation, ingenuity, and dedication. Embodying the ultimate achievement in EV charging technology.

Project EV's APEX charger, comes in both 7.3kW and 22kW variants, and is available as both tethered and untethered. Packed full of features, the APEX from Project EV, is perfect for domestic environments.



Install & Commission Within 10 Minutes

Long gone are the days of complex installations & prolonged set-ups. Within just 10 minutes, you can have an APEX EV charger installed and running on our smart app.



Multiple Connection Options

In a world where connectivity is key, the APEX EV charger leads the way offering WiFi, Bluetooth, 4G, and LAN¹ compatibility, ensuring seamless integration and convenience.



Integrated Protective Features

Safety is paramount, and the APEX EV charger is engineered with a comprehensive suite of integrated protective features; from PEN, to RCD, to surge protection.



Customisable Charger Face-Plate

Make your mark and tailor the APEX to match your clients branding. Create a lasting impression with a bespoke charge point that aligns perfectly with your clients identity and ethos.

¹LAN available in Q1 2024.

APEX 7kW / 22kW Charger:



EV Steel - Standard

APEX 7kW / 22kW Colour Front Plates:



Optional Colour Variations

Electric Vehicle Chargers

At Project EV, we are confident that we have the perfect charging solution to meet any client's needs. Our comprehensive range of high-quality chargers is designed to cater to various requirements, ensuring reliable and efficient performance for all types of electric vehicles. Whether for residential, commercial, or industrial applications, our chargers are equipped with the latest technology, offering unparalleled convenience and compatibility.



APEX Charger Untethered

[APEX-7S / APEX-22S]

- kW Rating: 7.3kW / 22kW
- Voltage: 230V / 400V
- Output: Type 2 Socket



APEX Charger Tethered

[APEX-7S-T / APEX-22S-T]

- kW Rating: 7.3kW / 22kW
- Voltage: 230V / 400V
- Output: Type 2 Cable



22kW NOVO AC Charger

[NOVO EVA-22S-SE]

- kW Rating: 22kW
- Voltage: 400V
- Output: Type 2 Socket



Dual Wall AC Charger

[EVA-07D-SE-W & EVA-22D-SE-W]

- kW Rating: 7.3kW / 22kW
- Voltage: 230V / 415V
- Output: X2 Type 2 Sockets



Dual Floor AC Charger

[EVA-07D-SE-RFID & EVA-22D-SE-RFID]

- kW Rating: 7.3kW / 22kW
- Voltage: 230V / 415V
- Output: x2 Type 2 Sockets



20kW DC Wall Charger

[EVD-20S-P]

- kW Rating: 20kW
- Voltage: 260-457V
- Output: CCS Type 2



40kW DC Charger

[EVD-40S-P & EVD-40D-P-CC]

- kW Rating: 40kW
- Voltage: 320-457V
- Output: X1 CCS Type 2 - X2 CCS Type 2



80-200kW DC Chargers

[EVD-80D/200D-CC]

- kW Rating: 80kW - 200kW
- Voltage: 320-457V
- Output: X2 CCS Type 2



240-480kW DC Chargers

[EVD-240/480-CC]

- kW Rating: 240kW - 480kW
- Voltage: 362-438V
- Output: X2 CCS Type 2

Ultra-Rapid High Powered DC Chargers

Range Extending from 60kW to 1MW

Perfect For Commercial, Fleet, & Public Charging Application.

EV Chargers Built Bespoke To Order

ENQUIRE TODAY

THE WHOLE OF HOUSE APPROACH

HELPING TO IMPROVE ENERGY EFFICIENCY



**Energy Efficient
Infrared Heating**



**Air Sourced Hot
Water**



**On-Roof & In-Roof
Solar Systems**



**Off-Peak Battery
Storage**



**Electric Vehicle
Charging**

At Project CÜRV we have designed a solution that integrates multiple high-performance, state-of-the-art technologies that seamlessly blend, and complement, one another to achieve maximum energy efficiency.

Our solution can be blended together to obtain a higher SAP or EPC score at a housing sector, local authority, or commercial level. One of the primary objectives of Project CÜRV is to combat fuel poverty effectively. By deploying our solution, we aim to significantly reduce energy bills for tenants and homeowners, thereby addressing a critical socio-economic challenge. The impact of our solution extends beyond individual households,

fostering community well-being and contributing to a more sustainable future.

Our range can be utilised as a complete package, or individual products. Contact us today and find out how Project CÜRV can help you achieve your energy efficiency targets.

www.projectcurv.co.uk



Raise SAP & EPC Scores Whilst Improving Home Efficiency.
Lowering Energy Bills And Raising Housing Portfolio Value



Domestic

Stylish, renewal and carbon conscious whole of home solution that raises home efficiency resulting in lower energy bills, higher house marketability with long warranties and low maintenance.



Trade

Building relationships with local and nationwide tradespeople, providing a complete renewable solution for plumbers, electricians, builders & roofers interested in the next generation of technology.



Commercial

A whole of house solution to help housing developers and associations achieve high SAP scores and improve EPC ratings, all through one solutions provider.

ENERGY EFFICIENT INFRARED HEATING



A COLLECTION OF SLEEK, SLIMLINE, INFRARED HEATING PANELS
AVAILABLE IN GLASS & ALUMINIUM



Fast Heat-Up Time

Infrared heating targets objects and individuals, instead of increasing the temperature of ambient air, providing warmth almost instantly upon being turned on.



Reduce Heating Bills

Infrared heaters are less energy-intensive compared to traditional heating methods, which can result in lower heating bills.



Versatile Mounting

All heating panels can be horizontally or vertically mounted, including the aluminium heating range which can be ceiling/grid ceiling mounted.



15-Year Warranty

Benefit from peace of mind with a 15-year warranty on all infrared heating panels as well as no requirement for regular servicing.

CLIMATIC ZONE CONTROL.

Become More Energy Efficient By Only Heating The Rooms You Are In!

By having full control over each individual heater in the system via the Project CŪRV Smart app, you can customise each of your rooms with a unique climate setting to suit your needs. Enjoy your desired temperature in each room of your home, with full climatic zone control.



Aluminium Infrared Heating Panels



Square Aluminium Infrared Heater [CE-AW6060]

- Dimensions: 595mm x 595mm
- Wattage: 400w
- Heating Area: 13.33m³



Small Rectangle Aluminium Infrared Heater [CE-AW9060]

- Dimensions: 595mm x 915mm
- Wattage: 600w
- Heating Area: 20m³



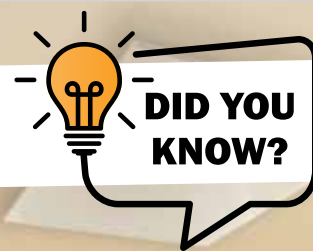
Standard Rectangle Aluminium Infrared Heater [CE-AW12060]

- Dimensions: 595mm x 1195mm
- Wattage: 800w
- Heating Area: 26.67m³



Large Rectangle Aluminium Infrared Heater [CE-AW16060]

- Dimensions: 620mm x 1600mm
- Wattage: 1100w
- Heating Area: 36.67m³



Our Aluminium Range are Ceiling and Drop Ceiling Mountable



Our Aluminium Infrared Heaters are versatile and lightweight, allowing them to be either ceiling-mounted, wall-mounted or installed in a suspended ceiling.

INFRARED Smart Control Methods:

Say hello to the future of home heating with the CÜRV Smart App. Designed with convenience and efficiency in mind, connect and view all your Infrared heaters in one place, and adjust when you want your heaters to turn on.



THE CÜRV® SMART APP.



CONTROL EVERYTHING.



Local Thermostat Control:

Customise and control the temperature of your room with the press of a button on a simple, intuitive thermostat interface.



CÜRV® THERMOSTAT.





Glass Infrared Heating Panels

Our elegance range of Infrared heating panels look fabulous, work efficiently, and are the safe, stylish, high-performance alternative to traditional gas central heating systems. Creating immediate thermal comfort and featuring a toughened glass finish; available in black, white, or mirror appearance.

Standard Infrared Glass Heaters:



Regular Infrared Glass Heater [CE-G12060]

- Dimensions: 1200mm x 600mm x 40mm
- Wattage: 750w
- Heating Area: 25m³



Large Infrared Glass Heater [CE-G15060]

- Dimensions: 1500mm x 600mm x 40mm
- Wattage: 1000w
- Heating Area: 33.33m³



Tall Infrared Glass Heater [CE-G18035]

- Dimensions: 1800mm x 350mm x 40mm
- Wattage: 650w
- Heating Area: 21.66m³



Infrared Mirror Heaters:



Regular Infrared Mirror Heater [CE-M8060]

- Dimensions: 800mm x 600mm x 65mm
- Wattage: 250w
- Heating Area: 8.33m³



Large Infrared Mirror Heater [CE-M10060]

- Dimensions: 1000mm x 600mm x 65mm
- Wattage: 300w
- Heating Area: 10m³



Tall Infrared Mirror Heater [CE-G18035]

- Dimensions: 1800mm x 350mm x 65mm
- Wattage: 650w
- Heating Area: 21.66m³

Infrared Towel Heaters:



Regular Infrared Towel Heater [CE-T12060]

- Dimensions: 1200mm x 600mm x 125mm
- Wattage: 600w
- Heating Area: 20m³



Large Infrared Towel Heater [CE-T18035]

- Dimensions: 1800mm x 350mm x 125mm
- Wattage: 550w
- Heating Area: 18.33m³



AIR SOURCED HOT WATER CYLINDERS

A COLLECTION OF SMART, ELECTRIC POWERED, ENERGY EFFICIENT HOT WATER CYLINDERS.



Fast Water Heat-Up Time

Benefit from a consistent and reliable supply of hot water quickly, making sure your household demands are met promptly and efficiently.



Reduce Water Bills

Air Sourced Hot Water Cylinders use renewable energy from the air to heat water, reducing electricity consumption and lowering water bills.



User Friendly Interface

With a built-in touch control LED display, you can take advantage of timer control for off-peak power settings.



5-Year Warranty

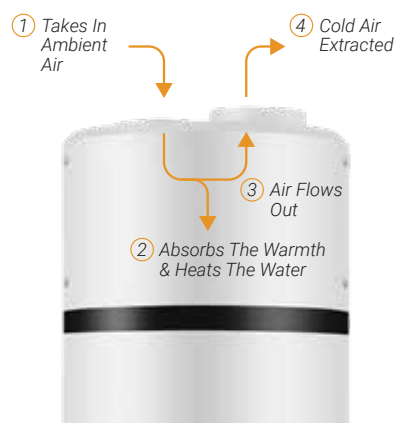
Benefit From Peace Of Mind With A 5-Year Warranty On All Air Sourced Hot Water Cylinders.

HIGHLY EFFICIENT & HIGHLY APPROVED.



Project CÜRV's range of air sourced hot water cylinders are highly efficient, achieving an A+ ERP rating across all products. Our cylinders are also recognised by prestigious governing bodies within energy efficiency, build-quality, and hot water technology.

HARNESS FREE HEAT FROM THE AIR



20%
Electrical Energy

+

80%
Ambient Heat
in the air

= 100%
Efficient Hot Water

Air Sourced Hot Water Cylinders



INTRODUCING

THE FUTURE OF HEATING HOT WATER:

Air Sourced Hot Water Cylinders use a heat pump to extract warmth from outside air, which is then transferred to heat water efficiently.

We've combined the renewable energy of an aerothermal source with a storage capacity of 80-250L, allowing our cylinders to adapt to a wide range of applications, ranging from small homes to light commercial.

With an Air Sourced Hot Water Cylinder you can receive domestic hot water at a fraction of the cost of older technologies, and the installation will only involve water piping so it's suitable for renewing previous hot water installations easily and conveniently.

Sleek, Smart Electric, Powered Hot Water Systems:



80L Hot Water Cylinder [CURV-HP80M5]

- Dimensions: 492mm x 537mm x 1170mm
- Wattage: 240w
- COP @ 14°C: 3.172



150L Hot Water Cylinder [CURV-HP150M5]

- Dimensions: 492mm x 537mm x 1680mm
- Wattage: 240w
- COP @ 14°C: 3.58



200L Hot Water Cylinder [CURV-HP200M3]

- Dimensions: 600mm x 629mm x 1692mm
- Wattage: 495w
- COP @ 14°C: 3.39



250L Hot Water Cylinder [CURV-HP250M3]

- Dimensions: 600mm x 629mm x 1987mm
- Wattage: 495w
- COP @ 14°C: 3.41

CREATING MASSIVE £££ SAVINGS WITH A LOW RUNNING COST!



More Efficient Than An Air Sourced Heat Pump

With the Project CŪRV air sourced hot water cylinder & infrared heating system save a total of:

37%*

Per annum versus an equivalent heat pump's running costs.

*Utilising an equivalent heat pump with the average usage of 4000kWh per annum, versus an average usage of 2500kWh per annum, with a Project CŪRV system. Applying an electricity tariff rate based on 34p/kWh.



The Average Annual Spend On Hot Water With Project CŪRV

Average Project CŪRV hot water running costs of just:

£28.28*

Per Month or
£339.36 Per Annum.

*Utilising an average usage of 998kWh per annum, with a 250L air sourced hot water cylinder, and applying an electricity tariff rate based on 34p/kWh.



More Efficient Than A Gas Central Heating System

With the Project CŪRV air sourced hot water cylinder & infrared heating system save a total of:

79%*

Per annum versus a typical Gas Central Heating running costs.

*Utilising an average usage of 12,000kWh per annum (based on Ofgem data, for a 2-3 bed property), versus an average usage of 2500kWh per annum, with a Project CŪRV system. Applying an electricity tariff rate based on 34p/kWh.

GO FULLY RENEWABLE

WITH SOLAR & BATTERY STORAGE

The world of solar and battery storage can be rather daunting to the uninitiated, with lots of jargon, insider knowledge, and considerations to make. It can be a challenging task to install a solar system to generate your own clean, green energy.

To simplify the art of solar energy, at Project CÜRV we have generated and built an expansive new collection of pre-picked Solar Kits, extending from 1.37kW to 4.55kW on-roof system sizes, and 0.92kW to 3.64kW in-roof system sizes. Our aim is to make solar systems accessible for all, offering solar kits that are compatible with a wide range of roof tile types, and solar kit options for both portrait and landscape systems.

We include every element within our solar kits, featuring the required number of solar panels for your chosen system size, full on-roof mounting components, and a solar inverter as standard. Our range of Project CÜRV solar kits are carefully picked and designed to include all the fundamentals any installer would need.

Enhancing our solar kits further, Project CÜRV has built solar kits that include battery storage systems, as standard, to truly optimise smart energy usage. Our battery storage systems extend from 3.1kW to 12.3kW.

Battery Storage Systems



3.1kW Battery Storage [SBK3100]

- Dimensions: 482.5mm x 645mm x 153mm*
- Max. Power: 3.1kW
- Component Included:
 - MC0600 x1
 - HV10230 x1



6.1kW Battery Storage [SBK6100]

- Dimensions: 482.5mm x 1116.5mm x 153mm*
- Max. Power: 6.1kW
- Component Included:
 - MC0600 x1
 - HV10230 x2



9.2kW Battery Storage [SBK9200]

- Dimensions: 965mm x 645mm x 153mm*
- Max. Power: 3.1kW
- Component Included:
 - MC0600 x1
 - HV10230 x3



12.3kW Battery Storage [SBK12300]

- Dimensions: 965mm x 1116.5mm x 153mm*
- Max. Power: 6.1kW
- Component Included:
 - MC0600 x1
 - HV10230 x4

Battery

Power Storage

Force Charge For Off-Peak Power
or Use To Enhance Your Solar
System.

*The dimensions of SBK3100 is a stacked dimensions of MC0600 (482.5x173.5x153) and HV10230 (482.5x471.5x153). Same measuring method applies to 6.1-12.3 kW Battery Storage.

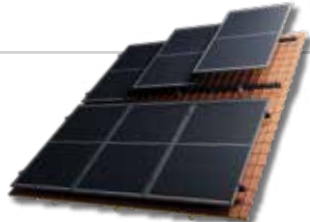
On-Roof Solar Systems



1.37kW In-Roof Solar Kit

Solar kit bundles, including everything from roof mounting, solar panels, & inverters.

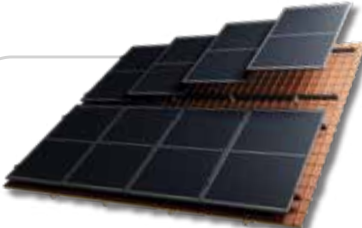
- 3 x 455w Panels (1 Row)
- On-Roof Blackline Mounting Rail
- 1.5kW Mini AC Inverter



2.73kW In-Roof Solar Kit

Solar kit bundles, including everything from roof mounting, solar panels, & inverters.

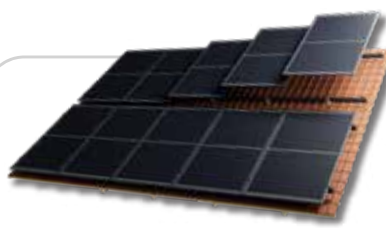
- 6 x 455w Panels (2 Rows)
- On-Roof Blackline Mounting Rail
- 3kW Mini AC Inverter



3.64kW In-Roof Solar Kit

Solar kit bundles, including everything from roof mounting, solar panels, & inverters.

- 8 x 455w Panels (2 Rows)
- On-Roof Blackline Mounting Rail
- 3kW Mini AC Inverter



4.55kW In-Roof Solar Kit

Solar kit bundles, including everything from roof mounting, solar panels, & inverters.

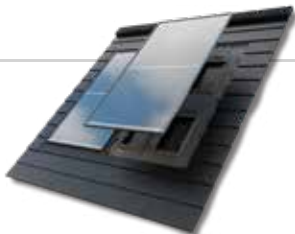
- 10 x 455w Panels (2 Rows)
- On-Roof Blackline Mounting Rail
- 3.6kW Boost AC Inverter

All-In-One Solar System Kits

On-Roof & In-Roof Solutions Compatible With A Variety Roof Types



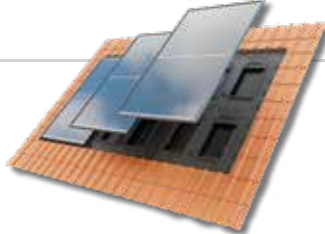
In-Roof Solar Systems



0.91kW In-Roof Solar Kit

Solar kit bundles, including everything from roof mounting, solar panels, & inverters.

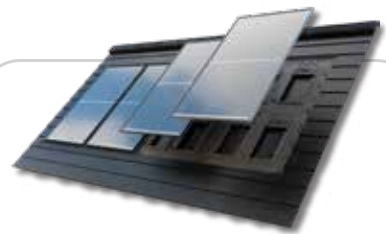
- 2 x 455w Panels (1 Row)
- Roof Integrated Pod Mounting System
- 1.5kW Mini AC Inverter



1.37kW In-Roof Solar Kit

Solar kit bundles, including everything from roof mounting, solar panels, & inverters.

- 2 x 455w Panels (1 Row)
- Roof Integrated Pod Mounting System
- 1.5kW Mini AC Inverter



1.82kW In-Roof Solar Kit

Solar kit bundles, including everything from roof mounting, solar panels, & inverters.

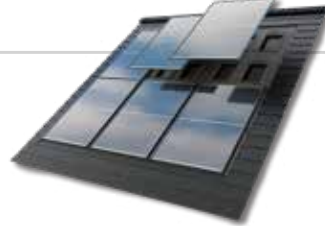
- 4 x 455w Panels (1 Row)
- Roof Integrated Pod Mounting System
- 1.5kW Mini AC Inverter



2.275kW In-Roof Solar Kit

Solar kit bundles, including everything from roof mounting, solar panels, & inverters.

- 5 x 455w Panels (1 Row)
- Roof Integrated Pod Mounting System
- 3kW Mini AC Inverter



2.73kW In-Roof Solar Kit

Solar kit bundles, including everything from roof mounting, solar panels, & inverters.

- 6 x 455w Panels (2 Rows)
- Roof Integrated Pod Mounting System
- 3kW Mini AC Inverter



3.64kW In-Roof Solar Kit

Solar kit bundles, including everything from roof mounting, solar panels, & inverters.

- 8 x 455w Panels (2 Rows)
- Roof Integrated Pod Mounting System
- 3.6kW Boost AC Inverter

COMMERCIAL RENEWABLE SOLUTIONS

HELPING BUSINESSES & CORPORATE CLIENTS ADOPT GREEN TECHNOLOGY



**Commercial
Solar Systems**



**Commercial Battery
Storage**



**Workplace, Fleet, & Public
EV Chargers**

We are the UK's leading renewable energy solutions provider offering a range of services and technologies to secure our client's energy future and carbon targets. From consultancy and initial design, through to installation and aftercare, with our end-to-end renewable energy services we've got you covered every step of the process. This is how our team of renewable energy experts, at Project Better Energy, deliver financial savings and renewable energy solutions for leading brands all over the country. Project Better Energy streamlines the path to businesses adopting renewable solutions by providing a range of payment options, such as finance solutions and fully funded

models, tailoring solutions to suit the unique financial needs of each enterprise.

Are you interested in finding out more about what renewable technology could do for your business? Contact us today to talk to a renewable energy specialist:



commercialenquiries@projectbetterenergy.com

YOUR BUSINESS, YOUR ENERGY FUTURE

EXPLORE THE MULTIPLE WAYS TO ATTAIN CUTTING-EDGE SOLAR TECHNOLOGY:



CAPEX Purchase Outright

Ownership Day One

Full ownership of the solar system, leading to greater control over energy generation and savings.

Energy Independence

Reduces dependence on the grid and fosters energy resilience and security for your business.

Maximised Savings

Immediate and long-term cost savings on energy bills.



Fully Funded Power Purchase Agreement (PPA)

No Upfront Cost

No initial capital investment is required, making it a cost-effective option for businesses.

Free Maintenance & Servicing

Your solar system is maintained by the PPA provider, reducing your maintenance responsibilities.

Ownership At The End

Preserve capital for other business investments or operational needs, & completely own your solar system after a 15, 20, or 25 year period.



Finance Your System

Affordable Entry

Minimal upfront costs, making it accessible for businesses with budget constraints.

Flexible Terms

Our finance agreements can be tailored to meet the specific needs and financial goals of a business.

Fixed Monthly Payments

Predictable monthly payments for budgeting and financial planning.

COMMERCIAL SOLAR SYSTEMS

At Project Better Energy, we specialise in bespoke-designed industry-leading commercial solar systems engineered to seamlessly integrate with your unique energy requirements. Our expertly crafted renewable energy solutions are meticulously designed to reduce operational costs, enhance your corporate sustainability, and drive increased profitability.



**Reduce Your
Energy Spend**



**Reduce Carbon
Output**



**Make A Return
On Investment**



COMMERCIAL BATTERY STORAGE

Our cutting-edge battery storage systems are designed to reduce costs, enhance energy management, and provide backup power during outages. Dive into the world of eco-friendly and cost-effective energy solutions and transform the way you manage energy, ensuring a brighter and more reliable future for your business.



**Reduce Grid
Dependence**



**Peak Shaving
Capabilities**



**Store Excess
Solar Energy**

ELECTRIC VEHICLE CHARGING

From fast to ultra-rapid charging infrastructure, to smart management systems, we offer a comprehensive suite of commercial EV charging solutions. Discover how our tailored solutions can boost employee satisfaction, attract customers, and position your business as a leader in the green mobility revolution.



**Generate
Additional Revenue**



**Tourism &
Destination
Charging**



**Future Proofing &
GOV Incentives**



Project
cürv

Air Sourced Hot

WATER CYLINDERS

The Project CÜRV range of Air Sourced Hot Water Cylinders provide a direct, energy efficient, solution to your hot water necessities.

www.projectcurv.co.uk

Project
cürv

Elegance Range

INFRARED HEATERS

Stylish, contemporary, energy efficient. Infrared technology is the future of low emission home heating and it's available now.

www.projectcurv.co.uk

PROJECT **EV**

Electric Vehicle

CHARGE POINTS

Working towards decarbonisation with renewable energy and electric vehicle charging is at the heart of what we do.

www.projectev.co.uk