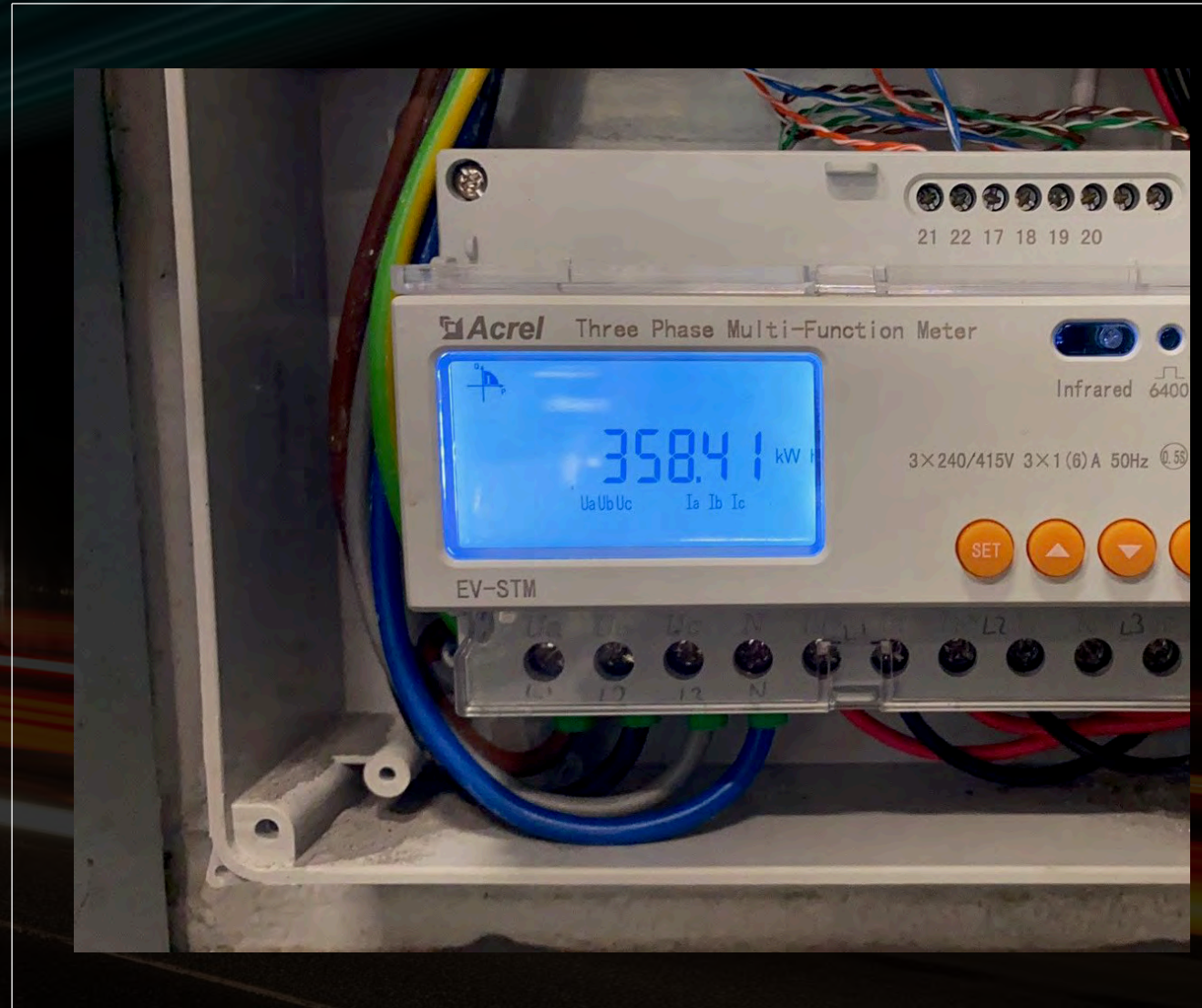


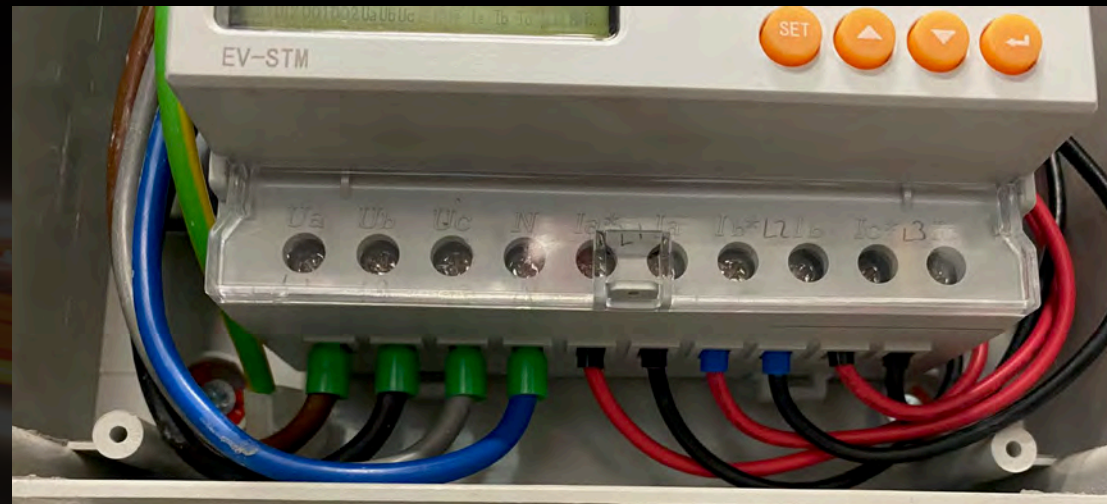
Three Phase Modbus Meter Setup



Three Phase Modbus Meter Setup EV-TPM

Terminal Connections

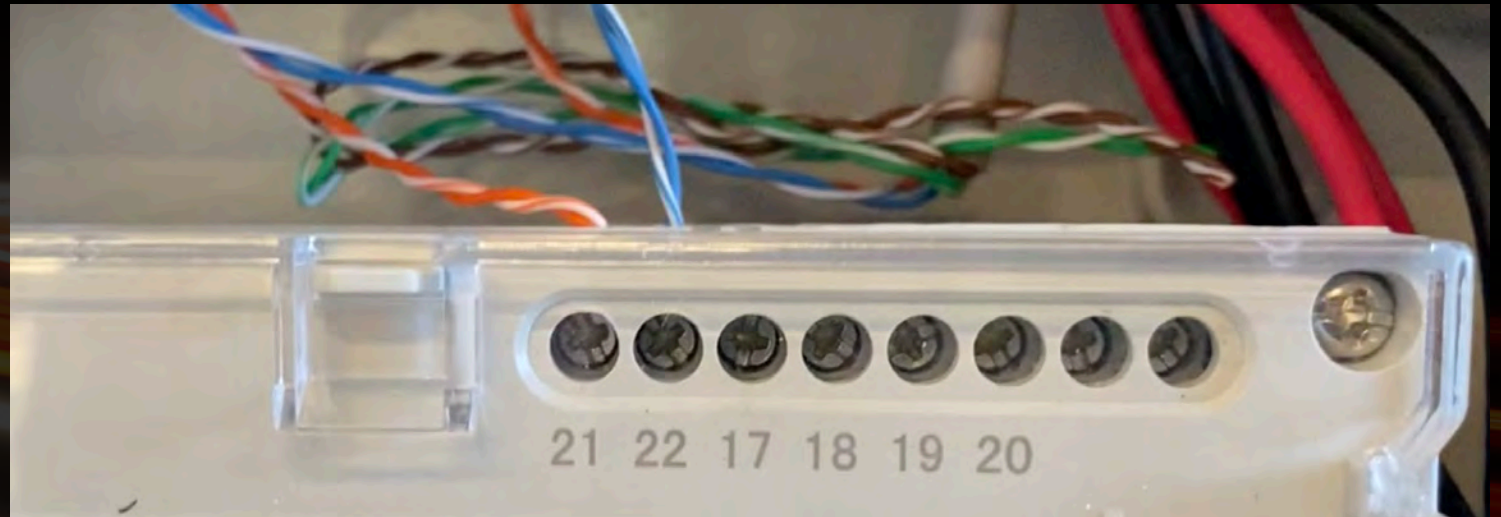
- Ua = L1
- Ub = L2
- Uc = L3
- N = N
- Ia* = + CT Clamp L1
- Ia* = - CT Clamp L1
- Ib* = + CT Clamp L2
- Ib* = - CT Clamp L2
- Ic* = + CT Clamp L3
- Ic* = - CT Clamp L3



Three Phase Modbus Meter Setup EV-TPM

Terminal Connections

Ua = L1
Ub = L2
Uc = L3
N = N
Ia* = + CT Clamp L1
Ia* = - CT Clamp L1
Ib* = + CT Clamp L2
Ib* = - CT Clamp L2
Ic* = + CT Clamp L3
Ic* = - CT Clamp L3



Data Terminal connections 21 / 22

Three Phase Modbus Meter Setup

EV-TPM



CT Clamp setup

CT Clamps need to be set to:

1. Press Set
2. Set Password to 0008 (up – Move left. / down – change number) > Enter
3. Use “Arrow UP” until you get to “in.”
4. Menu “in.” press Enter
5. Use Arrow keys to select “CT” > press Enter
6. Set to “0030” (up – Move left. / down – change number) > Enter
7. Press Set until SAVE
8. Press Enter
9. Press up to change to Yes
10. Press Enter
11. To Check Press the arrow btn until you can see the Amps being used.

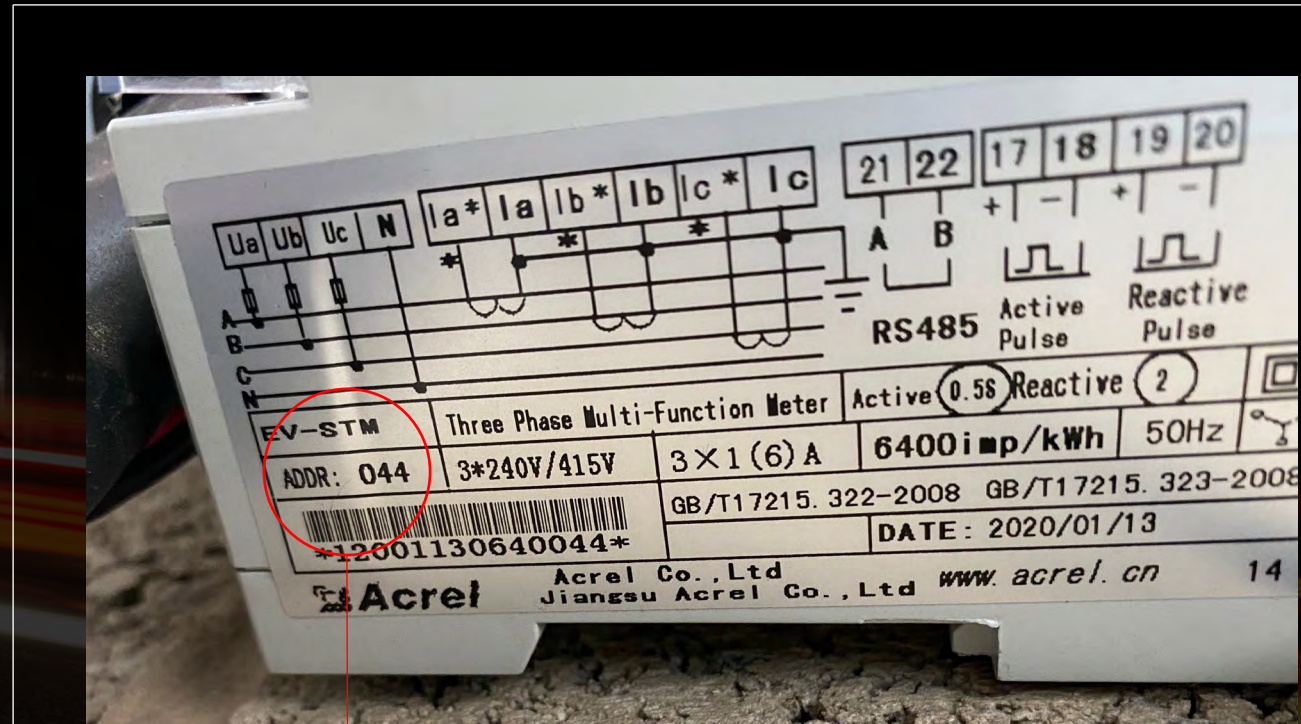
Meter Address setup

40kw requires the meter to be set to address 001

1. Press Set
2. Set Password to 0008 (up – Move left. / down – change number) > Enter
3. Menu “bus 1” press Enter
4. Menu “Addr” press Enter
5. Use Arrow keys (up – Move left. / down – change number) to set address to 001 > press Enter
6. Press Set until SAve
7. Presss Enter
8. Press up to change to Yes
9. Press Enter

Meter Address

1. Enable Power Allocation Charge
2. Set Current Wiring Method to Meter
3. Set Meter Type to Acrel
4. Enter this meter address in the Parameter settings



Three Phase Modbus Meter Setup

